

## THE BANYAN GROUP is:

A **complete outpatient practice** designed to meet the needs of the patient.

Our services are available throughout our offices; psychological testing, medication management, group therapy, family therapy, individual therapy in each of our offices. *You can receive most therapeutic services without traveling to different doctor's offices.*

We have **extended office hours in the evening** when most people need to use them and also have weekend and holiday availability.

You can reach our office from 10 A.M. to 9 P.M. Monday through Friday. Therapy hours are even more liberal: 8 A.M. to 9 P.M. Monday through Friday plus weekends and holidays.

When you call us you talk to a **real person** – no telephone routing program and no answering service during lunch. Our answering machine is used only for after hours.

All of our therapists or doctors are State of Florida licensed and experienced in their clinical specialty areas.

**We work for you**, not an insurance company. Quality of care is very important to us. Your therapy is determined by your specific needs and unique situation.

**We respect our patrons.**

*Richard Whittemore, LCSW*  
Executive Director



## Locations

3898 Via Poinciana Drive, #13  
Lake Worth, FL 33467  
(561) 967-2566

Palm Beach Lakes Blvd. & I-95  
West Palm Beach, FL 33409

PGA Blvd. & I-95  
Palm Beach Gardens, FL 33410

Belvedere Rd & 441  
Royal Palm Beach, FL 33411

Glades Road & I-95  
Boca Raton, FL 33431  
(561) 393-9887

## Hours of Operation

Therapy hours are from 8 A.M. to 9 P.M. Monday through Friday.  
Weekend and Holiday appointments are scheduled as available.

Office hours are from 10 A.M. to 9 P.M.  
Monday through Friday

Emergency beeper service is available after hours (for current patients only)

---

[www.banyangroup.com](http://www.banyangroup.com)  
[info@banyangroup.com](mailto:info@banyangroup.com)



# THE BANYAN GROUP



## 561.967.2566

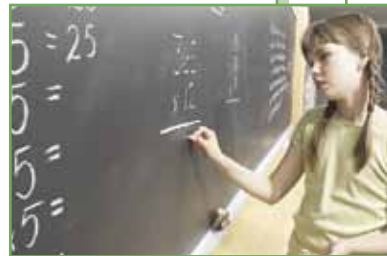
A COMPLETE  
OUTPATIENT PRACTICE  
Individual, group, family and  
marital therapy

*We work for you, not an insurance company*



## Services we offer

- Individual and Group Counseling
- Family Therapy
- Marital Therapy
- Substance Abuse Counseling/Education
- Family Interventions for Substance Dependence
- Pre-Marital Certification Course
- Child and Adolescent Therapy
- Stress Management
- Psychological Testing
- Psychiatric Evaluation/Medication
- Urinalysis
- Trainings/Workshops
- Consultation
- Mediation
- Employee Assistance Programs
- Educational Testing: IQ, Gifted, SLD
- Hypnosis



## Problems Addressed

- Depression
- Anxiety
- Phobias
- Attention Deficit Disorder
- Adjustment Issues
- Academic Problems
- Communication Difficulties
- Eating Disorders
- Anger Management
- Divorce Adjustment
- Smoking Cessation
- Post Traumatic Syndrome
- Domestic Violence
- Parent/Child Difficulties
- Grief and Loss
- Drug and Alcohol Abuse/

## Groups

- Women's Issues
- Substance Abuse
- Anger Management (Child and Adult)
- Parenting
- Anxiety
- Adolescent



*Groups subject to availability.*

## Employee Assistance Programs

We offer Employers a program that provides free services to their employees:

- Assessment & Referral to a Variety of Community Services
- Individual, Family or Marital Counseling
- Legal Consultation
- On Site Crisis Debriefing for Traumatic Events
- Workshops/Seminars/ Brown Bag Lunches
- Supervisor Training
- Work and Life Services
- Urinalysis

*Many times if you start with an EAP assessment you may remain with the same therapist for continuity of care.*

## How Services are Paid

If you have an insurance plan that **allows you to choose** your therapist or doctor you most likely are covered. We will assist you in getting started by verifying your benefits. **There will be no hidden costs or surprises.**

We made a decision to provide **quality and ethical treatment** to our patients, thereby giving them the right to the treatment they really need. As a result of this decision, **we do not accept any Managed Care Plans or HMOs.**

